

TATTOOS AND PIERCINGS

Kimberly Runnells, RN, BSN, SANE-A

OBJECTIVES

- ◉ To identify common piercings, tattoos, branding/genital modification that may be seen in forensic examinations.
- ◉ To recognize forensic and medical implications once identified and to recognize the appropriate actions during the forensic examination.

TATTOOS AND PIERCINGS

- ◉ Forensic Implications
- ◉ Medical Implications
- ◉ Genital Modification
- ◉ Identification of various tattoos and piercings
- ◉ Documentation of Findings

TATTOOS AND PIERCINGS

Forensic Implications

- ◉ **Piercings:**
 - Significant site of DNA collection - can harbor perpetrator DNA (Locard's Principle)

 - Obtain piercings as evidence if possible - follow local protocols or consult with area crime lab

 - Swab thoroughly around piercing site and on jewelry

TATTOOS AND PIERCINGS

Medical Implications

◎ *Piercings:*

- Risk of infection at piercing site or higher risk of infection
- May increase likelihood of injuries during assault - secondary trauma
- May need more invasive medical attention due to wounds (sutures, control bleeding)
- Oral piercings/hardware may become dislodged and compromise airway, secondary traumatic injuries

TATTOOS AND PIERCINGS

Forensic Implications

◎ *Tattooing/Branding:*

- Victim may receive branding during/after sexual assault
- Patient may remember perpetrator tattoo or piercings
- Perpetrator piercings may lead to higher incidence of DNA transfer (injuries from perpetrator/patient)
- Piercings may leave patterned injuries on patient or perpetrator

TATTOOS AND PIERCINGS

Medical Implications

- ◎ ***Tattooing/Branding:***
 - Patient may be at higher risk for HIV/Hepatitis or other fluid transferred viruses/infections

 - Branding of patient may lead to medical interventions

 - Higher risk of generalized infection

TATTOOS AND PIERCINGS

Genital Modification

- ◎ Genital Modification such as piercings or tattoos may introduce hurdles for forensic examiner
 - More difficult to identify trauma caused by assault

 - Blood/Body fluids from patient injury (significant bleeding) may remove perpetrator DNA

 - May impede speculum examination

TATTOOS AND PIERCINGS

Genital Modification



TATTOOS AND PIERCINGS

Body Modification/Piercings



TATTOOS AND PIERCINGS

Body Modification/Piercings



Surface Piercings



Tongue Piercings

TATTOOS AND PIERCINGS

Body Modification/Piercings



Nipple Piercings



Facial Piercings

TATTOOS AND PIERCINGS

Body Modification/Piercings



Naval Piercings



Eyebrow Piercing

TATTOOS AND PIERCINGS

Male Piercing Identification

Ampallang Piercing	Through penile head
Foreskin Piercing	Through foreskin only (superior or inferior)
Guiche Piercing	Through Pineal body inferior to scrotal sac
Prince Albert Piercing	Transurethral
Prince's Wand Piercing	Into urethral tube
Apadravya	Transcoronal

TATTOOS AND PIERCINGS

Male Piercing Identification



Ampallang Piercing



Ampallang piercing with penile shaft modification

TATTOOS AND PIERCINGS

Male Piercing Identification



Foreskin Piercing



Apadravya Piercing

TATTOOS AND PIERCINGS

Male Piercing Identification



Prince Albert Piercing -
may be on superior or
inferior side



Prince Albert Piercing

TATTOOS AND PIERCINGS

Male Piercing Identification



Prince's Wand Piercing -
usually held in place with
Prince Albert Piercing



Guiche Piercing

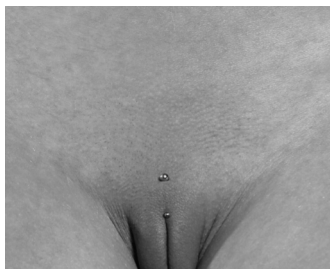
TATTOOS AND PIERCINGS

Female Piercing Identification

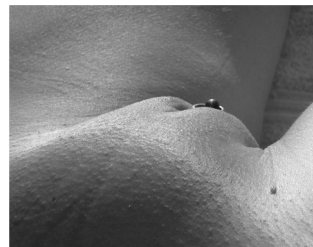
Christina Piercing	Junction of upper labia/mons (surface piercing)
Clitoral Hood Piercing	Upper labial minora, clitoral hood
Triangle Piercing	Deep clitoral
Labial Piercing	Inner or outer labia
Fourchette Piercing	Inferior labial juncture
Princess Albertina	Transurethral or transvaginal

TATTOOS AND PIERCINGS

Female Piercing Identification



Christina Piercing



Clitoral Hood Piercing

TATTOOS AND PIERCINGS

Female Piercing Identification



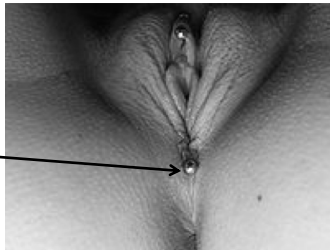
Triangle Piercing



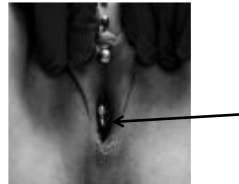
Labia Minora-Majora
Piercing with Hood
Piercing

TATTOOS AND PIERCINGS

Female Piercing Identification



Fourchette Piercing



Princess Albertina Piercing

TATTOOS AND PIERCINGS

Tattoo/Branding



TATTOOS AND PIERCINGS

Tattoo/Branding



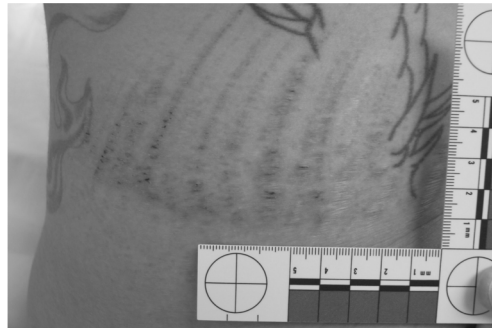
TATTOOS AND PIERCINGS

Tattoo/Branding



TATTOOS AND PIERCINGS

Tattoo/Branding



TATTOOS AND PIERCINGS

Documentation of Findings

Photos of tattoo should not be done

Simple notation on body diagram of "T" in the location of the tattoo

Concern for human trafficking - may consider obtaining photo for PD (relay this concern on the detective notes)

TATTOOS AND PIERCINGS

Documentation of Findings

*Do not need to photograph piercings

Indicate "P" or "Piercing" on body diagram

**consider potential for increase likelihood of injuries or transmission of STI, Hep, HIV during assault

TATTOOS AND PIERCINGS

Documentation of Findings

Example:

Potential for bias from a jury if this was photographed with the patient chart

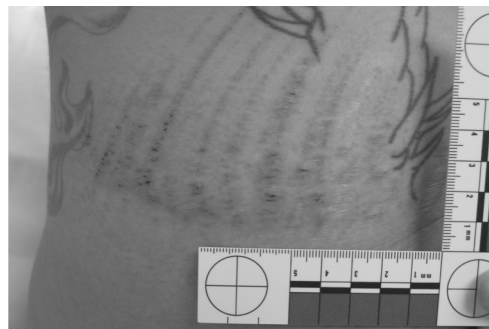


TATTOOS AND PIERCINGS

Documentation of Findings

*Documentation of these items **SHOULD** be in place if injuries are found or there are forensic implications revealed during examination.

Example:



TATTOOS AND PIERCINGS

Documentation of Findings

- ⦿ Documentation of wound/injury along with tattoo/piercing should be completed on examination paperwork along with a corresponding photograph revealing injury. (do NOT photograph piercing/tattoo unless injury is around or conjoined with it)
- ⦿ If body piercing/hardware is removed during examination and sent to crime lab for processing, a photograph should be taken of the jewelry or hardware prior to removal and after removal.
- ⦿ Remember to swab area prior to removal for transfer DNA along with jewelry or hardware
- ⦿ If injuries are found during examination related to or in proximal area to piercings - they should be removed during examination regardless of consent for lab processing due to risk of additional injury or infection (ie; swelling, secondary trauma)

TATTOOS AND PIERCINGS

Questions?